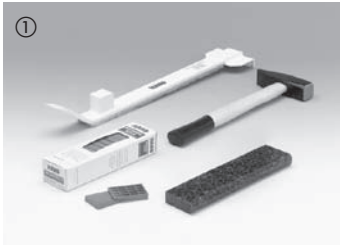


# Laying instructions for floating installation of Celenio with Lock Connect

Please read carefully from beginning to end before installing the floor!!

Please always comply with the installation instructions that are enclosed with the cartons. These instructions are binding!



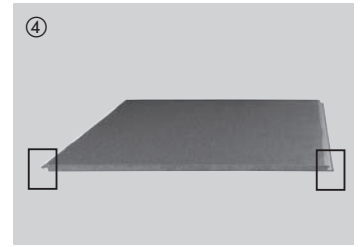
Laying tools: Tapping block, distance spacers, pull tool, hammer (min. 800 g).



Always use 0,2 mm thick PE film overlapped by 30 cm as an underlayment when laying your HARO floor over concrete screed or cast plaster subfloors or over underfloor heating. Extend underlay up all walls. After having installed the skirtings cut underlay at the upper edge of the skirtings.



For sound insulation and to smooth out slight irregularities of the subfloor, unroll 2 mm thick Silent cork underlay. Do not overlap. Our range of accessories also offers alternative insulation underlays. Asphalt-bitumen felt is not suitable for sound insulation.



Tongue side / Groove side



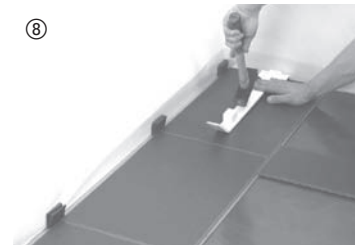
Starting in the left-hand corner of the room, align the boards of the first row with the tongue side parallel to the wall, and fix them in place with wall spacers or plastic spacers as you proceed (always keep an expansion gap of 10 - 15 mm (3/8" - 1/2") around perimeter).



Join the boards of the first row at the short sides using hammer and tapping block. It is important to ensure that the first row is straight and exactly parallel to the wall.



An easy trick to ensure a smooth interlocking of the Celenio boards at the short sides is to temporarily angle a leftover board piece lengthways into the two boards you want to click together.



Measure the last board of the first row and keep in mind to leave a gap of 10 to 15 mm between the board and the wall. Cut the board to size and fit it in with the pull tool. Start the second row with the leftover piece of the first row. This considerably reduces the amount of wastage. Please note: Always offset the end joints of adjoining rows by at least 18 cm.



The remaining rows should be installed board by board. First, the board is angled into the previous row along the long side by applying a small amount of force.



Then you interlock the board with the board to its left at the short side, using hammer and tapping block or, in hard-to-reach areas, the pull tool.



In doorways, mount a suitable moulding system to ensure the necessary expansion space. This also applies if the same floor is to be laid in the adjoining room. Leave an expansion space of approx. 5 mm between the board and the base of the moulding. As a rule, a fine saw must be used to cut a gap the thickness of a board in wooden door frames to allow Celenio to expand.



Cut to size and fit the last row. Leave a gap of 10 to 15 mm between the boards and the wall.



Be sure to remove all distance spacers once all boards are laid. Fasten skirtings (with or without clip system) to the walls – that's it.

Note: If radiator pipes protrude from the floor, drill or saw a cutout into the board, leaving the required expansion space.



Tip:  
The first row can be stabilised with Celenio cartons.

# Laying Instructions

Please read carefully from beginning to end before installing the floor!!

## Measures to take before installation

Do not open the cartons prior to installation. Store and climatise the unopened cartons inside. New constructions to be closed in with air conditioning or heating units during the winter months. Recommended room conditions for installation are 18 °C (65 °F).

**Important: Prior to installation, inspect each board in daylight for any visible faults or damage and also check colour, texture and geometric accuracy. No claims are accepted once flooring boards have been installed.**

**When installing, mix Celenio boards from different cartons to compensate for material-related colour variations.**

**Colour changes may occur from intensive exposure to light; Resilient and textile floor coverings must be removed completely before installation.**

**Celenio Lock Connect is not suitable for glue-down installation.**

**Celenio Lock Connect is not approved for commercial/public applications and for installation in bathrooms.**

## Installation direction

With floating installation in large areas over 10 m (33 ft.) in length or width, an expansion joint must be allowed for. Apply an expansion moulding or cover strip over said expansion joint.

- Ensure that the boards are always laid lengthways in narrow hallways.
- When installing T, L or U-shaped areas, separate the flooring areas according to the room layout by using a suitable profile system. Use suitable moulding systems for connections or transitions to fixed components.

## Subfloor:

The subfloor must be tested before laying according to the German standards VOB, Part C, DIN 18 365 "Flooring Works" and DIN 18 356 "Parquet Works." The subfloor must be dry, clean, even and absorbent, compression- and tension-proof, and free of cracks.

## Moisture check

The subfloor must be checked for moisture by using e.g. a CM measuring instrument.

## Moisture content limit

Cement screed max. 2.0 % CM, with underfloor heating 1.8 % CM; anhydride screed max. 0.5 % CM, with underfloor heating 0.3 % CM. When laying parquet flooring over newly installed concrete screed or cast plaster subfloors – after a curing time of at least 6 to 8 weeks – or over underfloor heating, always use 0.2 mm (8 mils) PE film as an underlayment for additional moisture protection. Overlap seams with 30 cm (12 ") and tape. When laying your floor in rooms on or below grade, it is necessary that a state-of-the-art or DIN-compliant moisture barrier be installed.

## Installation over underfloor heating

When installing your floor over underfloor heating, the screed must be laid in accordance with the German DIN 1853 standard. Before you start laying your parquet floor, please verify that the underfloor heating system has been installed in compliance with DIN EN 1264 and DIN 4725 and that the proper preparatory heat-up phase has been completed. Detailed instructions on the installation over underfloor heating can be obtained from your dealer.

## Care:

**Dry cleaning:** It is generally sufficient to clean Celenio dry using a mop, soft broom or vacuum cleaner.

**Damp cleaning:** We recommend damp mopping your floor surface regularly with Celenio basic cleaner diluted in water. Cleaning frequency depends here on the wear and tear your floor is subjected to. Add approx. 150 ml (use the 15 ml mark in the cap) of the floor cleaner to 1 bucket of water (8-10 litres). Then wipe the surface damp with a well wrung out

cloth. By buffing the treated surface dry with a HARO Polishing Cloth you give the Celenio surface an even shine.

**Please note: Do not use soap-based detergents, abrasive cleaners, scouring powder, steel wool, wax or polish for cleaning and maintenance. Always avoid letting water stand on the Celenio surface. Steam cleaning machines are not suitable for cleaning Celenio.**

## Room climate

What is good for people is also good for the high-grade woods of your Celenio floor. A room temperature of 20° C (68 °F), a relative humidity of about 50–60 % is required. In order to keep the air humidity constant, especially during hot periods, we recommend you use a humidifier. This will prevent any extreme drying out of the floor. It is advisable to use an electric humidifier right from the beginning of the heating period.

## Additional protection for your floor:

To preserve the quality and beauty of your floor we recommend using protective pads under chairs and furniture legs. The castors of armchairs and office chairs must comply with German Standard DIN 68 131. Use only lined rollers of type W (soft). It is also a good idea to use polycarbonate mats as underlay for armchairs and office chairs.

06/07 Subject to modification in the interest of technical development.